



First choice when  
quality counts.™

# Airless Guns, Tips, Extensions & Rollers



**A Full Range  
of Key  
Accessories for  
the Professional  
Painting  
Contractor**

COMPONENTS

*Get Graco. Experience The Difference.™*



## The Quality Difference.

Graco's quality difference for over 70 years has been to exceed the industry standard in design and manufacturing of every component. Our 49+ person engineering staff is progressively designing technologically superior products on sophisticated Computer-Aided Design equipment and performing extensive field tests. Once field tests are complete, each component then goes through rigorous testing to ensure each and every sprayer performs to its maximum life and performance.

In addition, Graco's manufacturing staff ensures all sprayers pass the most intensive quality tests. In fact, the expansive manufacturing facility is equipped with state-of-the-art computerized machinery for exact tolerances and consistent quality so nothing leaves the factory until it's in perfect working condition. So even though you can't always see the Graco quality difference, it's in there!

### HELPFUL HINT

*Even though Graco Airless Spray Guns are built for long life, you can extend the life of your gun even more with a daily maintenance routine. At the end of each day, clean and oil your gun with a lightweight spray oil such as WD-40.*

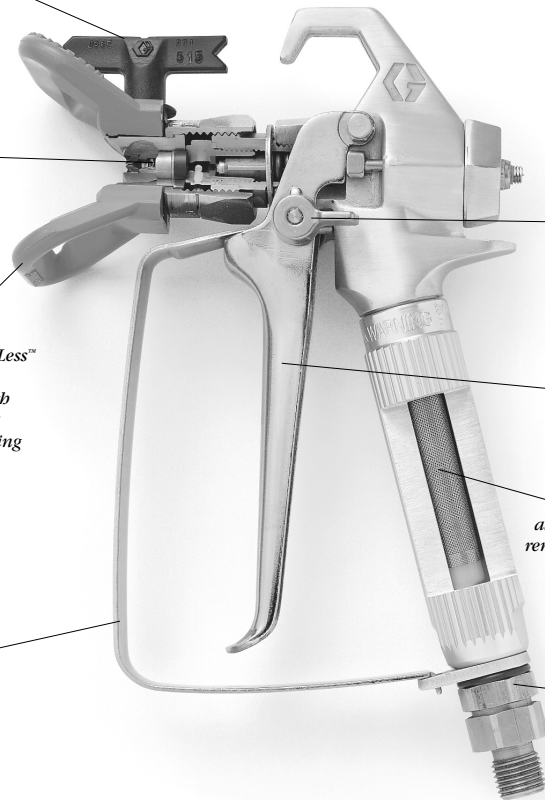
## The Quality Inside!

*Reverse-A-Clean™ (RAC) IV SwitchTip offers quick cleaning of tip plugs & allows easy switching of tips*

*Fluid Housing and Needle Assembly comes with Tungsten Carbide Ball & Seat for excellent wear resistance*

*Performance Series™ DripLess™ Tip Guard offers an aerodynamic design which virtually eliminates paint build-up, dripping & spitting*

*Trigger Guard easily detaches for easy access to the filter and helps prevent accidental triggering*



*Finger Latch Trigger Safety and Lock-on for quick & simple operation & clean-up*

*Full Trigger Design with lightweight trigger pull for extra comfort*

*Easy Access™, built-in filter allows for quick installation & removal, & reduces tip plugging*

*Smooth Glide™ Swivel provides for easier gun movement under pressure*

# The Warranty Difference.

## We build it. We back it. Period.

Because of our industry leading quality design and performance, we're able to offer the best overall warranty in the industry. This allows you to buy with confidence and gives you the lowest, long-term cost of operation, highest resale value and maximum performance.

Our warranty is also easy to use — there's no complicated paperwork. This warranty is in addition to the standard Graco Warranty\* described in the instruction manual. What you see is what you get!

### Standard 1-Year Warranty

Graco will repair or replace any defective gun component for the original owner for 1 year. This warranty does not cover consumable items such as spray tips.

### Downtime Eliminator™ Program

Graco's large distributor network offers you parts or service in almost every city throughout North America. If the warranty part you need is not in your distributor's stock, Graco offers FREE overnight, next business day delivery, when your distributor orders by 2 p.m. Central Standard Time. Plus, our Quik-Parts Plus Program offers over 250 parts 100% in stock at all times.

### Large Distributor Network

440+ conveniently located, authorized and certified service centers and 5400+ distributor locations stand behind Graco products. Trust these experts to provide quick, reliable service with genuine Graco parts, accessories and sprayers in stock.

### Assistance is just a phone call away

1-800-690-2894 for Customer Service

*\*Outside of the United States and Canada, not all conditions of the extended warranty may apply. Contact your local distributor for complete details.*



COMPONENTS

"It's nice to know that there are still some people who believe in their product enough to stand behind it. Graco Spray equipment has always given me trouble-free service, even when I was working under some very brutal commercial production situations. I have always found that Graco machines and replacement parts deliver what they promise and beyond."

Tom Epperson  
FineLine Painting Co.  
Sullivan's Island, SC



## The Performance Difference.

When you use Graco equipment, you'll notice one big difference right away...the Performance Difference. You won't find better spraying equipment for maximum user comfort, ease of operation and long life.

In fact, cycle tests show just how much longer our guns last. With Graco guns, you'll increase your time between repacking by over five times any competitive guns. This means less downtime and maintenance costs and increased productivity for you.

Count on Graco's airless guns to offer top performance day in and day out. Combine them with our accessories, and you'll always receive reliable, high quality performance.

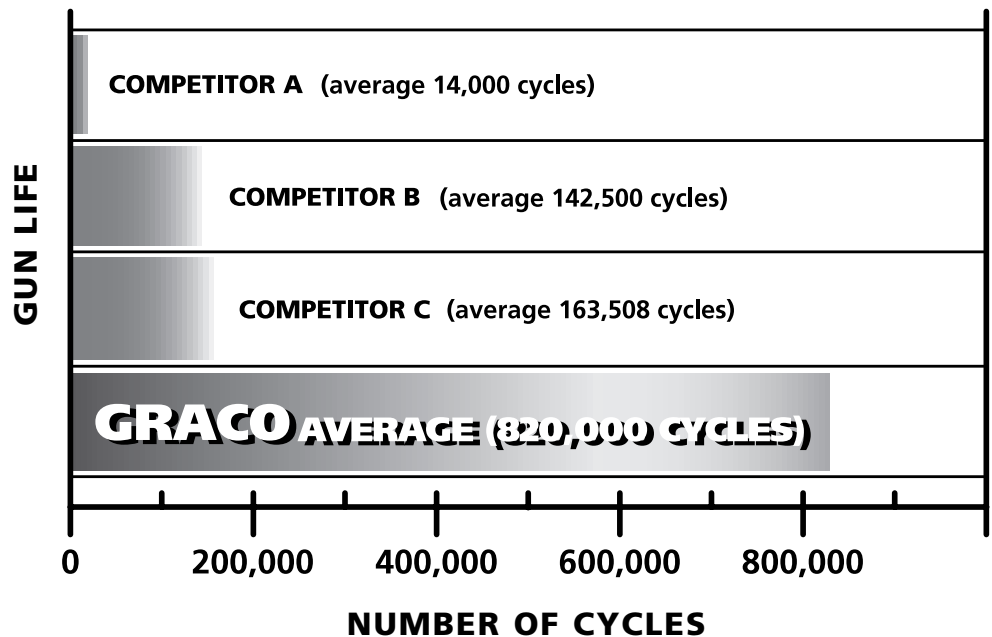


### See the difference for yourself:

"We only settle for the best. This includes Graco RAC tips which are simple, convenient to use, and are easy to clean out. There isn't another tip that will last longer, either."

Kay Armatage  
Armatage Painting  
West Jordan, UT

#### LONGEST TIME BETWEEN REPACKING







# The Product.

## Graco Airless Spray Guns

With over 35 years experience designing and manufacturing airless spray guns, you won't find a better gun than Graco. For maximum comfort, easy operation and longer packing life, Graco Airless Spray Guns provide the highest standard of quality and performance in the industry.

### CONTRACTOR FTX™ GUN

**238-350** Includes 515 RAC IV SwitchTip and Performance Series DripLess Tip Guard

- Well-balanced, lightweight, full-trigger airless spray gun
- Features Easy Access, 2-piece Filter and built-in Smooth Glide Swivel for top spraying performance
- Trigger pull is 30% lighter than competitors' for easier operation and less fatigue
- Working Pressure - 3600 psi (248 bar, 24.8 MPa) max.
- Fluid Orifice Diameter - 0.125 in. (3.2 mm)
- Repair kit - 218-070



### CONTRACTOR GUN

**220-955** Includes 517 Reverse-A-Clean™ (RAC) IV SwitchTip and Performance Series DripLess Tip Guard

**179-943** Optional 4-Finger Trigger available

- Top spraying performance for all paints
- Features Comfort Grip™ Form-Fitted Handle
- 2-Finger Trigger, Easy Access, 2-Piece Filter and built-in Smooth Glide Swivel for top spraying performance
- Stainless steel gun fluid tube
- Working Pressure - 3600 psi (248 bar, 24.8 MPa) max.
- Fluid Orifice Diameter - 0.125 in. (3.2 mm)
- Repair kit - 218-070



### SILVER PLUS™ GUN

**235-460** 2-Finger Trigger with Flat Tip Guard

**235-461** 4-Finger Trigger with Flat Tip Guard

**235-462** Fine Finish with 2-Finger Trigger and Flat Tip Guard

**235-463** 2-Finger Trigger with RAC IV 517 SwitchTip™ and Performance Series DripLess™ Tip Guard

- Known for its durability, long life, spraying performance and comfortable design
- Preferred by commercial, industrial and protective coatings contractors
- Lightweight – reduces fatigue
- Stainless steel fluid tube
- No needle adjustments required; needle guaranteed for life against breakage
- Working Pressure - 5000 psi (345 bar, 34.5 MPa) max.
- Fluid Orifice Diameter\* - 0.090 in. (2.3 mm)
- Repair kit - 235-474



COMPONENTS

"There is substantially less fatigue both in weight and trigger tension with the new Contractor FTX Gun. In addition, the new Performance Series Tip Guard is outstanding! I had no spray build-up on this guard whatsoever. The Contractor FTX Gun is the best all-around gun our personnel have used in a long time."

**Harry Ardizzone**  
Ardizzone Painting  
Beech Grove, IN

\*Includes all guns except 235-462 which has 0.037 in. fluid orifice



## REPLACE TIPS OFTEN FOR MAXIMUM PERFORMANCE

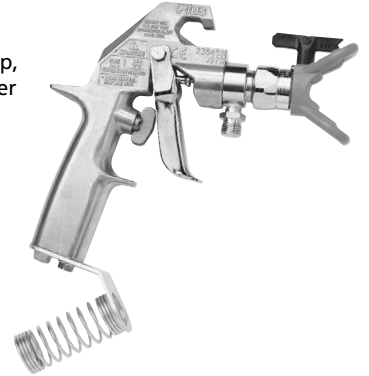
*Look for runs or sags in the spray pattern as signs of a worn tip. Don't increase pressure to combat these problems. You'll only waste paint and increase wear on the pump. Simply replace the old, worn tip.*

## FLEX™ PLUS GUN

**235-458** Flex Plus Gun with Flat Tip, 2-finger trigger

**235-459** Flex Plus Gun with 517 Reverse-A-Clean (RAC) IV SwitchTip, Performance Series DripLess Tip Guard and 2-finger trigger

- Offers same features as the Silver Plus Gun
- Lightweight, perfect for all-day spraying
- Airless hose connects directly to the gun through a spring guard mount on the handle base
- Lifetime guarantee against needle breakage
- Working Pressure - 5000 psi (345 bar, 34.5 MPa) max.
- Fluid Orifice Diameter - 0.090 in. (2.3 mm)
- Repair kit - 235-474



## BLACK MAX™ GUN

**220-730** Black Max Gun with Reverse-A-Clean IV SwitchTip, Performance Series DripLess Tip Guard and 2-finger trigger

- Economical, full-featured gun
- Use with medium viscosity paints such as latex
- Ideal for maintenance and residential painters
- Lightweight, 2-finger trigger and form-fitted handle for maximum comfort
- Ideal for smaller projects or as a backup gun
- Lifetime guarantee on the gun handle and body
- Working Pressure - 3600 psi (248 bar, 24.8 MPa) max.
- Fluid Orifice Diameter - 0.063 in. (1.6 mm)
- Repair kit - 218-558



## GUN HOSE KITS

**238-351** Contractor FTx Gun Hose Kit  
Includes Contractor FTx Gun, RAC IV SwitchTip, (.515) DripLess Tip Guard, and 1/4 in. x 50 ft. (6.3 mm x 15.2 m) Airless Hose

**220-962** Contractor Gun Hose Kit  
Includes Contractor Gun, RAC IV SwitchTip, (.517) DripLess Tip Guard, 1/4 in. x 50 ft. (6.3 mm x 15.2 m) Airless Hose and 3 ft. (0.9 m) Whip Hose

**238-000** Contractor Gun Hose Kit  
Includes Contractor Gun, RAC IV SwitchTip, (.517) DripLess Tip Guard, 3/8 in. x 50 ft. (9.5 mm x 15.2 m) Airless Hose and 3 ft. (0.9) Whip Hose

**235-472** Flex Plus Gun Hose Kit  
Includes Flex Plus Gun, RAC IV SwitchTip, (.517) DripLess Tip Guard, 1/4 in. x 50 ft. (6.3 mm x 15.2 m) Airless Hose and 3 ft. (0.9) Whip Hose

**235-473** Silver Plus Gun Hose Kit  
Includes Silver Plus Gun, RAC IV SwitchTip, (.517) DripLess Tip Guard, 1/4 in. x 50 ft. (6.3 mm x 15.2 m) Airless Hose and 3 ft. (0.9) Whip Hose

See Page 2-363 for High Performance Hose.



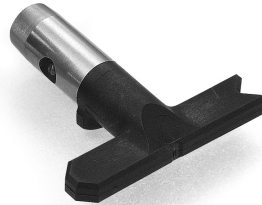
# Graco Airless Reversible Tips

## RAC IV AIRLESS SWITCHTIP (black handle)

Order Part No. 221-XXX

- Most widely-used reversible tip on the market
- Available in over 100 sizes
- Ideal for residential, commercial or industrial jobs
- Sprays lacquers to mastics
- Compact design for better control, easy operation in tight areas
- Easy to install on any airless spray gun – without tools
- Working Pressure - 4050 psi (279 bar, 28.0 MPa) max.

See Page 2-364 for available sizes.

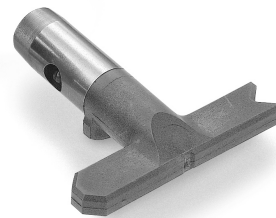


## FINE FINISH RAC TIP (green handle)

Order Part No. FFR-XXX

- Sprays lacquers, varnishes, stains, high finish enamels or other fine finish coatings
- Patented two-stage atomization process creates a soft, feathered spray pattern
- Produces a smooth, extremely fine finish with consistent material thickness
- Allows spraying at lower pressures for more control and dramatic overspray reduction
- Eliminates need to reduce or thin most coatings
- Working Pressure - 3000 psi (210 bar, 21.0 MPa) max.

See Page 2-364 for available sizes.

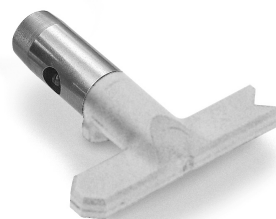


## LINELAZER™ RAC TIPS (yellow handle)

Order Part No. LLT-XXX

- Creates clean, laser-sharp lines with no fuzzy edges or thin spots
- Designed specifically for parking lots, roads, warehouse floors, crosswalks and athletic fields
- Sprays heavy waterbase to thin alkyd traffic paints
- Ensures consistent paint thickness, less overspray and longer-lasting lines
- Working Pressure - 4050 psi (279 bar, 28.0 MPa) max.

See Page 2-364 for available sizes.



## HEAVY-DUTY RAC TIPS (grey handle)

Order Part No. GHD-XXX

- Recommended for filled materials that cause tip plugging such as high solids coatings and fibrous mastics
- Use with virtually all paints and coatings – solvent or waterbased
- Common applications include bridges, tank farms, structural steel and roofing
- Use with a wider range of sprayers
- Extra thick twist lever allows rotation even with dried, sticking coatings
- Features a secure, single screw assembly which allows you to secure tip to housing (ideal for heavy-duty applications)
- Working Pressure - 5000 psi (350 bar, 35.0 MPa) max.

See Page 2-365 for available sizes.



## REVERSE-A-CLEAN™ SWITCHTIPS

- Most widely used reversible tip on the market
- Ideal for residential, commercial or industrial spray jobs
- Use with lacquers to mastics
- Compact design provides better control, making it easier to operate in tight areas
- Easy to identify. Clearly stamped with a number indicating tip size (fan width and orifice)



## THE RIGHT COMBINATION

*The combination of Graco Reverse-A-Clean (RAC)*

*SwitchTips and Performance*

*Series Guards gives you*

*unrivaled spraying*

*performance.*

- *RAC SwitchTips are designed for easy tip unplugging & quick tip changes*
- *Broadest selection of the highest quality spray tips available*
- *All tips are manufactured with the highest quality Tungsten Carbide, tested for flow rate & liquid boned for longer life*
- *Performance Series DripLess Tip Guards are guaranteed to be the best performing airless tip guards on the market. They offer a patented aerodynamic design which virtually eliminates dripping or material build-up*

## Standard Tips

### CONTRACTOR FLAT TIPS

Order Part No. 269-XXX

- Tungsten Carbide orifice for optimum hardness and wear-resistance to abrasive architectural coatings
- Available in a variety of sizes
- Liquid-honed for a better spray pattern and longer life
- Recommended to use filter with smaller sizes to avoid tip plugging
- When plugging occurs, tip must be removed from gun and cleaned or replaced
- Working Pressure - 5000 psi (345 bar, 34.5 MPa) max.

See Page 2-366 for available tip sizes.



### SILVER FLAT TIPS

163-XXX (Odd)

- Premium flat airless tips manufactured primarily for industrial spray applications where tighter tolerances are required for both material flow rate and fan width
- Sprays low viscosity products such as lacquers, varnishes, shellacs and enamels to heavier viscosity coatings including acrylics, latex, oil bases, blockfillers, epoxies, zinc chromates, roof coatings, mastics and adhesives
- Wide range of sizes available:
  - Fan widths from 2 to 26 in. (51 to 660 mm)
  - Orifice sizes from .011 to .081 in. (.28 to 2.1 mm)
  - Flow rates from 0.05 to 1.31 U.S. gpm (0.19 to 4.96 lpm)
- Working Pressure - 5000 psi (345 bar, 34.5 MPa) max.

See Page 2-367 for available tip sizes.



### FINE FINISH FLAT TIPS

Order Part No. 163-XXX (Even)

- Excellent for spraying extremely smooth finishes
- Recommended for varnishes and lacquers in high quality wood finishing as well as modified urethanes and topcoats
- Features a pre-orifice which provides a fine finish like air spray, but with the control of airless
- To avoid tip plugging, use extra filtration with Fine Finish Flat Tips, or choose a Reversible Fine Finish Tip
- Working Pressure - 3000 psi (210 bar, 21.0 MPa) max.

See Page 2-366 for available tip sizes.





# DripLess Tip Guards



## PERFORMANCE SERIES™ DRIPLESS™ TIP GUARDS (Use with RAC Tips)

**237-859** For 7/8 in. (22 mm) thread size. Fits Graco & Titan guns  
Replaces 220-422

**237-858** For 11/16 in. (17 mm) thread size. Fits Graco Pole Guns  
(older style) and Wagner guns. Replaces 220-542

- Accepts RAC IV, Fine Finish RAC or LineLazer RAC Tips in over 100 sizes
- Aerodynamic design directs the material flow, creating a tighter, more consistent pattern while minimizing overspray
- Virtually eliminates paint build-up, dripping and spitting
- Backed by a 30-day satisfaction guarantee



### A TIP ON TIPS

*A rule of thumb: use smaller orifice sizes when you're applying lower viscosity materials such as stains and lacquers. Use larger orifice sizes for heavier viscosity coatings such as latex or oil base paints.*

## HEAVY-DUTY RAC GUARDS (Use with Heavy-Duty RAC Tips)

**222-674** For 7/8 in. (22 mm) thread size

- Use with Heavy-Duty RAC tips
- Patented aerodynamic design
- Extra large tip guard for heavier coatings



## FLAT TIP GUARDS (Use with Contractor and Silver Flat Tips)

**220-251** For 7/8 (22 mm) thread size. Fits Graco and Titan Guns

**220-255** For 11/16 in. (17 mm) thread size. Fits Graco Pole Guns  
(older style), Wagner, Airlessco and ASM guns



## FINE FINISH FLAT TIP GUARDS (Use with Fine Finish Flat Tips)

**220-247** DripLess Tip Guard Kit for Fine Finish Tips. Use with Silver Plus, Contractor, Flex Plus and Black Max guns [7/8 in. (22 mm) nut]

**220-249** DripLess Tip Guard Kit for Fine Finish Tips. Use with Pole Guns, Tip Filter Housings and Swivel Adapters [11/16 in. (17 mm) nut]





## Graco Extended Reach and Pressure Roller Accessories

Graco's full line of Extended Reach Tools speeds up your production. You'll extend your range and spray more efficiency — no ladders or scaffolding.

### HELPFUL HINT

*Spraying at the lowest possible pressure will significantly extend the service life of major pump components - and spray tips too!*

### POLE GUNS

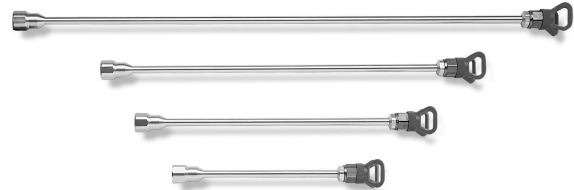
238-318	8 ft (2.4 m)
238-316	6 ft (1.8 m)
238-314	4 ft (1.2 m)
238-313	3 ft (0.9 m)
238-312	2 ft (0.6 m)
238-311	1 ft (0.3 m)



- Unmatched spraying performance in high or recessed areas
- Unique full-length needle shuts fluid flow off at tip for crisp spray patterns with no spitting or waiting
- In-line valve provides easy, comfortable operation
- Balanced design; no excessive weight at the end of pole like gun-attached devices
- Includes Easy Turn Directional Spray Head with 180° Swivel, RAC IV SwitchTip (515) and Guard
- Optional tip filter-kit (220-254) recommended for those who prefer flat tips

### TIP EXTENSIONS

240-043	30 in. (75 cm)
240-042	20 in. (50 cm)
240-041	15 in. (38 cm)
240-040	10 in. (25 cm)



- For easier spraying in hard-to-reach areas such as soffits, high walls and ceilings
- Unique fitting design and captive gasket allows quick attachment to airless gun or in-line valve
- Includes: Flat Tip Guard standard with 7/8 in. (22 mm) gun nut (fits Graco or Titan guns)
- For Wagner or other guns, order 1/2 in. (17 mm) gun nut, adapter (180-146)

### HEAVY-DUTY EXTENSIONS

232-125	80 in. (200 cm)
232-124	60 in. (150 cm)
232-123	40 in. (100 cm)
232-122	20 in. (50 cm)
232-121	10 in. (25 cm)



- Tough, lightweight aluminum construction
- Includes a unique captive gasket designed for quick attachment to airless gun or in-line valve
- Ideal for high pressure spraying or low pressure roller applications
- No extra couplings/fittings required
- Use alone or connect together to achieve desired length
- Working Pressure - 3000 psi (210 bar, 21.0 MPa) max.
- Standard with 7/8 in. (22 mm) gun nut (fits Graco or Titan guns)
- For Wagner, ASM or Airlessco or other guns, order 1/2 in. gun nut, adapter (181-085)



## PRESSURE ROLLER ATTACHMENTS

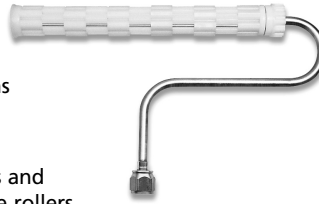
Painting with a roller has never been this easy! No more reaching, climbing, stooping or continual filling of the roller from messy paint trays. You'll be completing those tough, larger jobs in half the time of traditional painting methods. And that means more profit in less time.

**240-055** 12 in. (30 cm)

**240-005** 9 in. (23 cm)

**240-054** 3 in. (8 cm)

- Connects to airless sprayer for pressure roller applications
- Graco's GeoSpurse™ roller head distributes paint evenly across roller cover for a consistent, even finish
- Provides consistent finish, while eliminating heavy edges and uneven build often associated with competitors' pressure rollers
- Standard with 7/8 in. (22 mm) gun nut (fits Graco or Titan guns)
- Order Roller Cover
- Working Pressure - 3000 psi (210 bar, 21.0 MPa) max.



## REPLACE TIPS OFTEN FOR MAXIMUM PERFORMANCE

*Worn-out tips also wear components in your equipment much faster.*

*By spraying materials properly with correctly sized Graco tips, and replacing them when necessary, you'll maximize productivity, save paint and earn more profits.*

## PRESSURE ROLLER ACCESSORY – TELESCOPING

**218-625**

- Connects to airless spray gun for pressure roller applications
- 18 in. to 36 in. (46 cm to 91 cm) telescoping extension provides great job site versatility, includes 9 in. x 1/2 in. (229 mm x 13 mm) roller cover
- Graco's GeoSpurse™ Roller Head distributes paint evenly across roller cover
- Provides consistent finish, and eliminates heavy edges and uneven build associated with competitor's pressure roller
- Standard with 7/8 in. (22 mm) gun nut (fits Graco or Titan guns)
- For Wagner, ASM or other guns using 11/16 in. (17 mm) gun nut, order with Part No. 181-085 Gun Adapter
- Working Pressure - 3000 psi (210 bar, 21.0 MPa) max.



## High Performance Fluid Hose

- Less pressure drop for more performance at the gun
- Upgraded conductive core protects against static charge build-up
- Tough urethane jacket resists abrasion and chemicals for longer life
- Working pressure: 3000 psi (210 bar, 21.0 MPa)

**238-360** 1/4 in. X 25 ft (6.3 mm X 7.6 m)

**238-361** 1/4 in. X 50 ft (6.3 mm X 15.2 m)

**238-387** 1/4 in. X 100 ft (6.3 mm X 30 m)

**238-362** 3/8 in. X 25 ft (9.5 mm X 7.6 m)

**238-363** 3/8 in. X 50 ft (9.5 mm X 15.2 m)

**238-397** 3/8 in. X 100 ft (9.5 mm X 30 m)

**238-358** Whip, 3/16 in. X 3 ft (4.8 mm X 0.9 m)

**238-359** Whip, 3/16 in. X 6 ft (4.8 mm X 1.8 m)





## Fine Finish RAC Tips

### Fine Finish RAC Tips (FFR-XXX) Tip Sizes and Flow Rates

		Orifice Size (Inches)		
		.010	.012	.014
Fan Width	(in.) (mm)			
	4-6 (102-152)	210	212	214
	6-8 (152-203)	310	312	314
	8-10 (203-254)	410	412	414
	10-12 (254-305)	510	512	514
12-14 (305-356)		612	614	
Flow rate (gpm)		.11	.15	.21
Flow rate (l/min.)		.41	.59	.80

(water @ 2000 psi, 138 bar, 13.8 MPa)

*Tip Identification: Fine Finish RAC Tips must be ordered using six characters. The first three characters are always FFR. The next three characters are numbers as shown in the selection chart of available sizes. For example, the correct order number for a tip with a .010 orifice and a 10 in. (254 mm) pattern is FFR-510.*

*Fan width of spray pattern is measured at 12 in. (305 mm) from the surface.*

## RAC IV Tips

### RAC IV Tips (221-XXX) Tip Sizes and Flow Rates

		Orifice Size (Inches)																					
		.007	.009	.011	.013	.015	.017	.019	.021	.023	.025	.027	.029	.031	.033	.035	.039	.043	.045	.051	.055	.063	.065
Fan Width	(in.) (mm)																						
	2-4 (51-102)			111		115																	
	4-6 (102-152)	207	209	211	213	215	217	219	221	223	225						235						
	6-8 (152-203)	307	309	311	313	315	317	319	321	323	325	327			331								
	8-10 (203-254)		409	411	413	415	417	419	421	423	425	427	429		433	435	439	443		451	455		
	10-12 (254-305)		509	511	513	515	517	519	521	523	525	527	529	531	533	535		543		551	555	563	
	12-14 (305-356)		609	611	613	615	617	619	621	623	625	627	629	631	633	635		645		655		665	
14-16 (356-406)									721	723	725		729			735							
16-18 (406-457)					815	817	819	821				827		831	833	835							
Flow rate (gpm)						917										935							
Flow rate (lpm)		0.05	0.09	.12	.18	.24	.31	.38	.47	.57	.67	.77	.90	1.03	1.17	1.31	1.63	1.98	2.17	2.79	3.25	4.26	4.53
		.20	.33	.49	.69	.91	1.17	1.47	1.79	2.15	2.54	2.96	3.42	3.90	4.42	4.98	6.18	7.51	8.23	10.57	12.29	16.13	17.17

(water @ 2000 psi, 138 bar, 13.8 MPa)

*Tip Identification: RAC IV Tips must be ordered using six characters. The first three characters are always 221. The next three characters are numbers as shown in the selection chart of available sizes. For example, the correct order number for a tip with a .011 orifice and a 6 in. (152 mm) pattern is 221-311.*

*Fan width of spray pattern is measured at 12 in. (305 mm) from the surface.*

*If the size you need is not listed, custom tip sizes can be manufactured. Contact your Graco representative for details.*

## LineLazer Tips

### LineLazer Tips (LLT-XXX) Tip Sizes and Flow Rates

		Orifice Size (Inches)								
		.013	.015	.017	.019	.021	.023	.025	.027	.055
Line Width	(in.) (mm)									
	2 (51)	213	215	217	219					
	4 (102)		315	317	319	321	323		327	355
	6 (152)			417	419	421				
12 (305)					621	623	625	627		
Flow rate (gpm)		.18	.24	.31	.38	.47	.57	.67	.79	3.25
Flow rate (lpm)		.69	.91	1.17	1.47	1.79	2.15	2.54	2.96	12.29

(water @ 2000 psi, 138 bar, 13.8 MPa)

*Tip Identification: LineLazer Tips must be ordered using six characters. The first three characters are always LLT. The next three characters are numbers as shown in the selection chart of available sizes. For example, the correct order number for a tip with a .015 orifice and a 8 in. (203 mm) pattern is LLT-315.*

*Line width of spray pattern is measured at 6 in. (152 mm) from the surface with traffic paint at 2000 psi (138 bar, 13.8 MPa).*

## Heavy-Duty RAC Tips



### Heavy-Duty RAC Tips (GHD-XXX) Tip Sizes and Flow Rates (part 1)

#### Orifice Size (Inches)

Fan Width	(in.)	(mm)	.007	.009	.011	.013	.015	.017	.019	.021	.023	.025	.027	.029	.031	.033	.035
	2-4 (51-102)			107	109	111	113	115	117	119	121				129		
4-6 (102-152)				209	211	213	215	217	219	221		225	227	229	231		235
6-8 (152-203)			307	309	311	313	315	317	319	321	323	325	327	329	331	333	335
8-10 (203-254)				409	411	413	415	417	419	421	423	425	427	429	431	433	435
10-12 (254-305)				509	511	513	515	517	519	521	523	525	527	529	531	533	535
12-14 (305-356)				609	611	613	615	617	619	621	623	625	627	629	631	633	635
14-16 (356-406)					711	713	715	717	719	721	723	725	727	729	731	733	735
16-18 (406-457)						813	815	817	819	821	823	825	827	829	831	833	835
18-20 (457-508)											923		927		931	933	935
Flow rate (gpm)			.05	.09	.12	.18	.24	.31	.38	.47	.57	.67	.74	.90	1.03	1.17	1.31
Flow rate (lpm)			.20	.33	.49	.69	.91	1.17	1.47	1.79	2.15	2.54	2.96	3.42	3.90	4.42	4.98

(water @ 2000 psi, 138 bar, 13.8 MPa)

### Heavy-Duty RAC Tips (GHD-XXX) Tip Sizes and Flow Rates (part 2)

#### Orifice Size (Inches)

Fan Width	(in.)	(mm)	.037	.039	.041	.043	.045	.047	.049	.051	.053	.055	.057	.059	.061	.063	.065	.067	.069	.071	.075	.081					
	2-4 (51-102)				139																						
4-6 (102-152)				239																							
6-8 (152-203)			337	339	341	343	345	347	349	351		355									461	463	465	467	471	475	481
8-10 (203-254)			437	439	441	443	445	447	449	451		455															
10-12 (254-305)			537	539	541	543	545	547	549	551	553	555	557	559	561	563	565	567				571	575				
12-14 (305-356)			637	639	641	643	645	647	649	651		655	657	659	661	663	665	667	669	671	675						
14-16 (356-406)			737	739	741	743		747	749	751	753	755			761	763		767			771						
16-18 (406-457)			837	839	841	843		847		851		855			861	863		867									
18-20 (457-508)			937	939																							
Flow rate (gpm)			1.47	1.63	1.8	1.98	2.17	2.37	2.58	2.79	4.26	3.25	3.49	3.74	4.0	4.26	4.53	4.82	5.11	5.41	6.04	7.04					
Flow rate (lpm)			5.56	6.18	6.83	7.51	8.23	8.98	9.76	10.57	16.13	12.29	13.2	14.14	15.12	16.13	17.17	18.24	19.34	20.48	22.85	26.66					

(water @ 2000 psi, 138 bar, 13.8 MPa)

*Tip Identification: Heavy-Duty RAC Tips must be ordered using six characters. The first three characters are always GHD. The next three characters are numbers as shown in the selection chart of available sizes. For example, the correct order number for a tip with a .039 orifice and a 10 in. (254 mm) pattern is GHD-539.*

*Fan width of spray pattern is measured at 12 in. (305 mm) from the surface.*

*If the size you need is not listed, custom tip sizes can be manufactured. Contact your Graco representative for details.*





## Contractor Flat Tips

Contractor Flat Tips (269-XXX)														
Tip Sizes and Flow Rates														
Orifice Size (Inches)														
	(in.)	(mm)	.011	.013	.015	.017	.019	.021	.023	.025	.027	.029	.031	.035
Fan Width	4-6	(102-152)	211	213	215	217	219			225	227			
	6-8	(152-203)	311	313	315	317	319		323	325	327			
	8-10	(203-254)	411	413	415	417	419	421	423	425	427			435
	10-12	(254-305)	511	513	515	517	519	521	523	525	527		531	
	12-14	(305-356)		613	615	617	619	621	623		627		631	635
	14-16	(356-406)			715	717		721		725				
	16-18	(406-457)			815		819	821			827	829	831	
	18-20	(457-508)								925				
Flow rate (gpm)			.12	.18	.24	.31	.38	.47	.57	.67	.74	.90	1.03	1.31
Flow rate (lpm)			.49	.69	.91	1.17	1.47	1.79	2.15	2.54	2.96	3.42	3.90	4.98

(water @ 2000 psi, 138 bar, 13.8 MPa)

Tip Identification: Contractor Tips must be ordered using six characters. The first three characters are always 269. The next three characters are numbers as shown in the selection chart of available sizes. For example, the correct order number for a tip with a .011 orifice and a 10 in. (254 mm) pattern is 269-511.

Fan width of spray pattern is measured at 12 in. (305 mm) from the surface.

If the size you need is not listed, custom tip sizes can be manufactured. Contact your Graco representative for details.

## Fine Finish Flat Tips

Fine Finish Flat Tips (163-XXX)															
Tip Sizes and Flow Rates															
Orifice Size (Inches)															
	(in.)	(mm)	.008	.010	.012	.014	.016	.018	.020	.022	.024	.026	.028	.030	.032
Fan Width	2-4	(51-102)	108	110											
	4-6	(102-152)	208	210	212	214	216	218			224				232
	6-8	(152-203)		310	312	314	316	318	320	322	324				
	8-10	(203-254)	408	410	412	414	416	418	420		424	426	428	430	432
	10-12	(254-305)		510	512	514	516	518	520	522	524	526	528	530	
	12-14	(305-356)		610	612	614	616	618	620	622	624	626	628		
	14-16	(356-406)			712	714	716	718				726			
	16-18	(406-457)				814	816	818	820	822	824	826	828		832
18-20	(457-508)			1012	914		918		922	924	926				
Flow rate (gpm)			.069	.11	.15	.21	.27	.35	.43	.52	.62	.73	.84	.97	1.1
Flow rate (lpm)			.26	.41	.59	.79	1.04	1.32	1.63	1.97	2.34	2.75	3.19	3.66	4.16

(water @ 2000 psi, 138 bar, 13.8 MPa)

Tip Identification: Fine Finish Flat Tips must be ordered using six characters. The first three characters are always 163. The next three characters are numbers as shown in the selection chart of available sizes. Note: orifice size on a Fine Finish Tip is always an even number. For example, the correct order number for a tip with a .010 orifice and a 10 in. (254 mm) pattern is 163-510.

Fan width of spray pattern is measured at 12 in. (305 mm) from the surface.



## Silver Flat Tips

### Silver Flat Tips (163-XXX) Tip Sizes and Flow Rates (part 1)

#### Orifice Size (Inches)

Fan Width	(in.)	(mm)	Orifice Size (Inches)																	
			.007	.009	.011	.013	.015	.017	.019	.021	.023	.025	.027	.029	.031	.033	.035	.037	.039	.041
2-4	(51-102)		107	109	111	113	115	117	119	121										
4-6	(102-152)		207	209	211	213	215	217	219	221	223	225	227	229	231		235		239	
6-8	(152-203)		307	309	311	313	315	317	319	321	323	325	327	329	331		335		339	341
8-10	(203-254)		407	409	411	413	415	417	419	421	423	425	427	429	431	433	435		439	441
10-12	(254-305)			509	511	513	515	517	519	521	523	525	527	529	531	533	535		539	541
12-14	(305-356)			609	611	613	615	617	619	621	623	625	627	629	631	633	635	637	639	641
14-16	(356-406)				711	713	715	717	719	721	723	725	727	729	731	733	735	737		
16-18	(406-457)					813	815	817	819	821	823	825	827	829	831	833	835		839	841
18-20	(457-508)						915	917	919	921	923	925	927	929	931	933	935		939	
<b>Flow rate (gpm)</b>			.05	.09	.12	.18	.24	.31	.38	.47	.57	.67	.79	.90	1.03	1.17	1.31	1.47	1.63	1.8
<b>Flow rate (lpm)</b>			.20	.33	.49	.69	.94	1.17	1.47	1.79	2.15	2.54	2.69	3.42	3.90	4.42	4.98	5.56	6.18	6.83

(water @ 2000 psi, 138 bar, 13.8 MPa)

*Tip Identification: Silver Flat Tips must be ordered using six characters. The first three characters are always 163. The next three characters are numbers as shown in the selection chart of available sizes. For example, the correct order number for a tip with a .043 orifice and a 12 in. (305 mm) pattern is 163-643.*

*Fan width of spray pattern is measured at 12 in. (305 mm) from the surface.*

*If the size you need is not listed, custom tip sizes can be manufactured. Contact your Graco representative for details.*

### Silver Flat Tips (163-XXX) Tip Sizes and Flow Rates (part 2)

#### Orifice Size (Inches)

Fan Width	(in.)	(mm)	Orifice Size (Inches)																			
			.043	.045	.047	.049	.051	.053	.055	.057	.059	.061	.063	.065	.067	.069	.071	.073	.075	.077	.079	.081
6-8	(152-203)					351				357	359											
8-10	(203-254)	443	445		449	451		455	457	459	461	463	465	467	469	471	473	475	477	479	481	
10-12	(254-305)	543	545	547		551	553	555	557	559	561	563	565	567	569	571	573					
12-14	(305-356)	643	645	647		651		655	657	659	661	663	665	667	669	671						
14-16	(356-406)				749				757	759		763		767								
16-18	(406-457)		845	847	849						861	863	865	867								
18-20	(457-508)																					
<b>Flow rate (gpm)</b>			1.98	2.17	2.37	2.58	2.79	4.26	3.25	3.49	3.74	4.0	4.26	4.53	4.82	5.11	5.41	5.72	6.04	6.36	6.70	7.04
<b>Flow rate (lpm)</b>			7.51	8.23	8.98	9.76	10.57	6.13	12.29	13.2	14.14	15.12	16.13	17.17	18.24	19.34	20.48	21.65	22.85	24.0	25.36	26.66

(water @ 2000 psi, 138 bar, 13.8 MPa)

